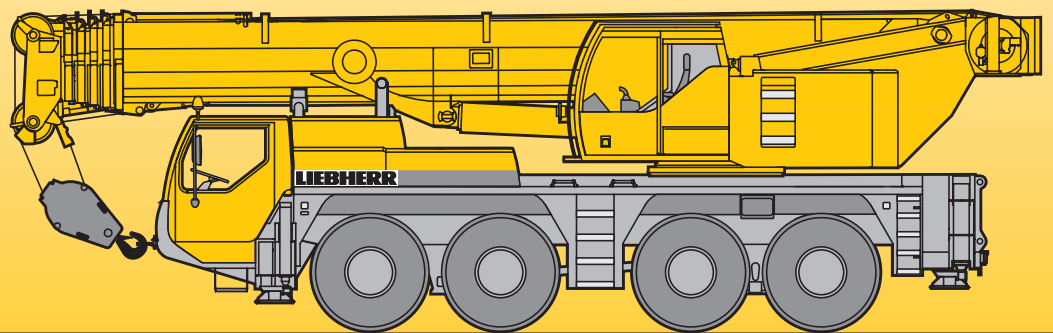


Mobile Crane Grue mobile

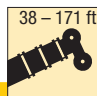

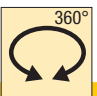
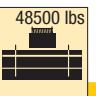
LTM 1100-4.1

Technical Data Caractéristiques techniques



LIEBHERR

Lifting capacities on telescopic boom Forces de levage à la flèche télescopique

38 - 171 ft    48500 lbs  **85%**

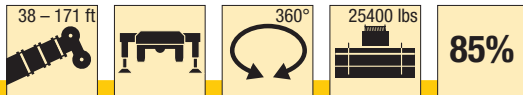
ft	ft												ft	
	38 ft	50 ft	62 ft	74 ft	87 ft	99 ft	111 ft	123 ft	135 ft	148 ft	160 ft	171 ft		
8	238												8	
9	230	201											9	
10	217	199											10	
11	205	188											11	
12	194	178	168	143									12	
13	184	168	167	143									13	
14	175	160	160	144	136	113							14	
15	166	152	152	144	136	113							15	
16	155	145	146	140	132	112	92.5						16	
17	146	139	139	136	129	111	92						17	
18	138	132	133	131	125	109	90.5	73.5	61				18	
20	122	120	120	120	117	105	88	73	61				20	
22	110	108	109	109	105	99	85.5	70.5	59.7	49.3			22	
24	99	98	99.5	98.5	95.5	92	83	68	58.2	48.9			24	
26	90	89	90.5	89.5	87.5	84.5	80	65	56.5	48	42.7		26	
28			83	81.5	81.5	77.5	73.5	62.5	54.5	46.9	42.2	32.9	28	
30			76	75	75.5	71.5	67.5	60	52.5	45.7	41.5	32.8	30	
32			70	69.5	69.5	66	62.5	57.7	50.6	44.2	40.7	32.2	26	32
34			65	65	64.5	61.5	58	54.9	48.6	42.7	39.6	31.7	25.7	34
36			61	61.5	60.5	57.3	54.4	51.8	46.7	41.3	38.4	31.1	25.3	36
38			56.9	57.7	56	53.2	50.7	48.7	44.8	39.9	37.2	30.6	24.8	38
40				54.1	52.2	49.6	47.5	45.9	42.9	38.5	36.1	30.1	24.4	40
45				45.8	44.9	42.6	41.6	40.3	37.8	35.4	33.5	28.8	23.3	45
50				39.2	39	37.1	37.1	35.4	33.2	32.2	30.5	27.6	22.3	50
55					34	32.8	33	31.3	29.6	28.9	27.9	26.2	21.5	55
60						29.3	29.4	28.1	26.9	25.8	25.7	24.5	20.6	60
65						25.8	26.3	25.4	24.4	24	23.3	21.8	19.7	65
70						22.9	23.5	23.3	22.1	21.9	21	19.6	18.6	70
75							21	21.3	20.3	19.9	19	17.7	17.2	75
80							19.2	19.2	18.8	18.1	17.2	15.9	15.7	80
85							18	17.2	16.9	16.2	15.5	14.4	14.2	85
90								15.8	15.4	14.6	13.9	12.9	12.7	90
95								14.5	13.9	13.2	12.5	11.6	11.5	95
100									12.7	12	11.4	10.5	10.4	100
105									11.7	11	10.4	9.5	9.4	105
110									10.9	10.1	9.5	8.6	8.5	110
115										9.3	8.7	7.8	7.7	115
120										8.6	8	7.1	7	120
125											7.3	6.4	6.3	125
130											6.7	5.8	5.7	130
135											6.1	5.2	5.1	135
140												4.6	4.6	140
145													4	145
150													3.5	150
155													2.9	155

* over rear / en arrière

TAB 140190 / 140437

Lifting capacities on telescopic boom





Forces de levage à la flèche télescopique






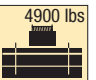
ft	38 ft	50 ft	62 ft	74 ft	87 ft	99 ft	111 ft	123 ft	135 ft	148 ft	160 ft	171 ft	ft
9	197												9
10	195												10
11	184	168											11
12	174	167	143										12
13	165	164	143										13
14	156	156	144	136	113								14
15	147	147	143	134	113								15
16	139	139	136	124	112	92.5							16
17	131	131	127	117	108	91.5							17
18	123	124	118	110	103	89.5	73.5	61					18
20	108	109	100	98	91.5	84.5	72.5	61					20
22	96.5	95.5	90.5	86.5	81	75.5	68.5	59.7	49.3				22
24	86.5	84	81.5	77	72	67.5	63.5	57.2	48.9				24
26	77.5	75	72.5	69	65	61	57.7	53.7	48	42.7			26
28		68	65.5	62.5	59	56.4	53.7	50.1	46.1	42.2	32.9		28
30		61.5	59.6	57	53.8	52.1	50	46.7	44	41.2	32.8		30
32		56.2	54.6	52.3	49.8	48.8	46.1	43.4	41.6	39.1	32.2	26	32
34		51.7	50.5	48.4	46.3	45.6	43	40.6	39.1	37.1	31.7	25.7	34
36		47.5	47	45.1	43.1	42.6	40.4	38.2	36.6	35.2	31.1	25.3	36
38		43.4	43.5	41.7	39.9	39.5	37.8	35.8	34	33.3	30.6	24.8	38
40			40.3	38.8	37	36.8	35.4	33.6	31.8	31.4	29.7	24.4	40
45			34	34.3	31.5	31.5	31	29.9	28.4	27.1	25.4	23.3	45
50			29	29.8	27.1	28	27.1	26.1	24.8	23.5	21.8	21	50
55				25.7	23.8	24.9	23.7	22.7	21.6	20.4	18.8	18.5	55
60					21.6	21.9	20.8	19.9	18.9	17.8	16.3	16	60
65					19.2	19.2	18.4	17.6	16.6	15.6	14.2	14	65
70					16.9	16.9	16.3	15.7	14.8	13.8	12.5	12.2	70
75						15	14.3	13.8	13	12.2	10.9	10.7	75
80						13.3	12.6	12.1	11.5	10.8	9.6	9.4	80
85						11.9	11.3	10.8	10.2	9.5	8.4	8.2	85
90							10.2	9.7	9.1	8.4	7.3	7.2	90
95							9.2	8.7	8.1	7.4	6.4	6.2	95
100								7.9	7.2	6.6	5.5	5.4	100
105								7.1	6.4	5.8	4.8	4.6	105
110								6.4	5.7	5.1	4.1	4	110
115									5.1	4.5	3.5	3.3	115
120									4.4	3.9	2.9	2.8	120
125										3.3			125
130										2.7			130
135										2.2			135

TAB 140307

Lifting capacities on telescopic boom Forces de levage à la flèche télescopique

    85%													
ft	38 ft	50 ft	62 ft	74 ft	87 ft	99 ft	111 ft	123 ft	135 ft	148 ft	160 ft	171 ft	ft
9	178												9
10	176												10
11	167	152											11
12	157	151	130										12
13	148	147	130	124									13
14	140	140	129	121	103								14
15	132	131	126	115	102								15
16	123	123	117	106	97.5	84.5							16
17	115	116	109	99	93	82.5							17
18	108	109	101	94	88	79	66.5	55.6					18
20	94.5	95	86	84.5	78	72	65.5	55.4					20
22	84	83	78.5	75	69.5	64.5	59.9	53.6	44.8				22
24	73.5	73.5	71	66.5	62	58.2	55	50.8	44.3				24
26	63	66	63.5	59.8	55.9	52.5	50.9	47	43.4	38.9			26
28		58.5	57.5	54.5	51.2	49.1	46.8	43.3	41	37.6	29.9		28
30		51.6	52.1	49.6	47	46	43	39.9	38.3	35.9	29.8		30
32		46.2	47.4	45.5	43.2	42.4	40.2	37.6	35.5	33	29.3	23.6	32
34		41.9	43.3	42.2	40	39.4	37.6	35.4	33.2	31	28.3	23.4	34
36		38.3	39.7	39.4	37.2	36.7	35	33.3	31.4	29.5	27.1	23	36
38		34.7	36.1	36.6	34.3	34	32.4	31.3	29.6	28	25.9	22.6	38
40			32.9	33.9	31.8	31.6	30.2	29.3	27.9	26.5	24.5	22.1	40
45			27.1	28.4	26.7	27.6	26.5	25.3	23.9	22.5	20.8	20	45
50			22.7	23.9	23.5	24	23	21.9	20.7	19.4	17.8	17.3	50
55				20.3	20.5	20.8	20	19	17.9	16.7	15.2	14.8	55
60					17.6	17.8	17.5	16.6	15.6	14.5	13.1	12.7	60
65					15.3	15.5	15.2	14.6	13.6	12.6	11.3	11	65
70					13.4	13.6	13.2	12.7	11.9	11	9.8	9.5	70
75						12	11.5	11.1	10.5	9.7	8.4	8.2	75
80						10.6	10.2	9.8	9.2	8.4	7.2	7	80
85						9.4	9	8.6	8	7.4	6.2	6	85
90							7.9	7.6	7.1	6.4	5.3	5.1	90
95							7	6.7	6.2	5.6	4.5	4.3	95
100								5.9	5.4	4.8	3.7	3.6	100
105								5.1	4.6	4.1			105
110								4.5	4	3.4			110
115									3.4	2.9			115
120									2.8				120

TAB 140313

    85%													
ft	38 ft	50 ft	62 ft	74 ft	87 ft	99 ft	111 ft	123 ft	135 ft	148 ft	160 ft	171 ft	ft
9	176												9
10	174												10
12	154	150	128	114									12
14	134	131	117	105	94.5								14
16	116	108	97	92.5	85.5	75							16
18	99	93	85	81	74	67.5	56.5	52.6					18
21	77	73	70.5	65.5	60.5	56.1	52.9	48.9	41.8				21
24	60.5	60.5	58.1	54.6	51.1	49.5	45.7	42.8	39.7	33.2			24
27		50.5	49	46.2	43.3	42.2	39.7	36.7	34.1	32.5	27.6		27
30		41.9	41.7	41.4	37.1	36.4	35.2	33.5	31.3	29.5	27.1	23.1	30
33		35.1	36.4	36	32.2	33.1	31.4	29.6	27.8	25.9	23.8	23	33
36		30.3	31.8	32.1	29.5	29.8	28.2	26.6	24.9	23.2	21.2	20.5	36
39		25.5	27.1	28.2	27.1	26.4	24.9	23.5	22.1	20.6	18.7	18.1	39
45			20.9	22.1	22.1	21.5	20.2	19.1	17.9	16.6	14.9	14.5	45
51			16.5	17.7	17.9	17.8	16.7	15.7	14.6	13.5	12	11.6	51
57				14.4	14.6	14.7	13.9	13	12.1	11	9.6	9.4	57
63					12.1	12.2	11.6	10.9	10	9	7.7	7.5	63
69					10	10.2	9.6	9.1	8.3	7.4	6.2	6	69
75						8.6	8.1	7.7	6.9	6	4.8	4.6	75
81						7.1	6.8	6.4	5.7	4.8			81
87							5.6	5.3	4.6	3.8			87
93							4.6	4.3	3.7				93
99								3.5					99
105								2.7					105
111								2.1					111

TAB 140316

Lifting capacities on telescopic boom Forces de levage à la flèche télescopique

38 - 62 ft		0°		48500 lbs		85%	
ft	38 ft	50 ft	62 ft	ft			
9	55.6			9			
10	55			10			
11	51.5	51.9	53.2	11			
12	48.2	50.4	51.6	12			
13	45.2	47.4	48.6	13			
14	42.6	44.8	46	14			
15	40.1	42.3	43.6	15			
16	37.9	40.1	41.3	16			
17	35.9	38.1	39.3	17			
18	34.1	36.3	37.5	18			
20	30.5	32.7	34	20			
22	27.6	29.8	31.1	22			
24	25	27.2	28.5	24			
26	22.7	24.9	26.1	26			
28		22.9	24.1	28			
30		21	22.3	30			
32		19.4	20.6	32			
34		18	19.2	34			
36		16.7	17.9	36			
38		15.4	16.6	38			
40			15.5	40			
45			13	45			
50			11.1	50			

0° = over rear / en arrière

tyre size / dimensions de pneumatiques: 16.00 R 25 / 20.5 R 25

TAB 140178

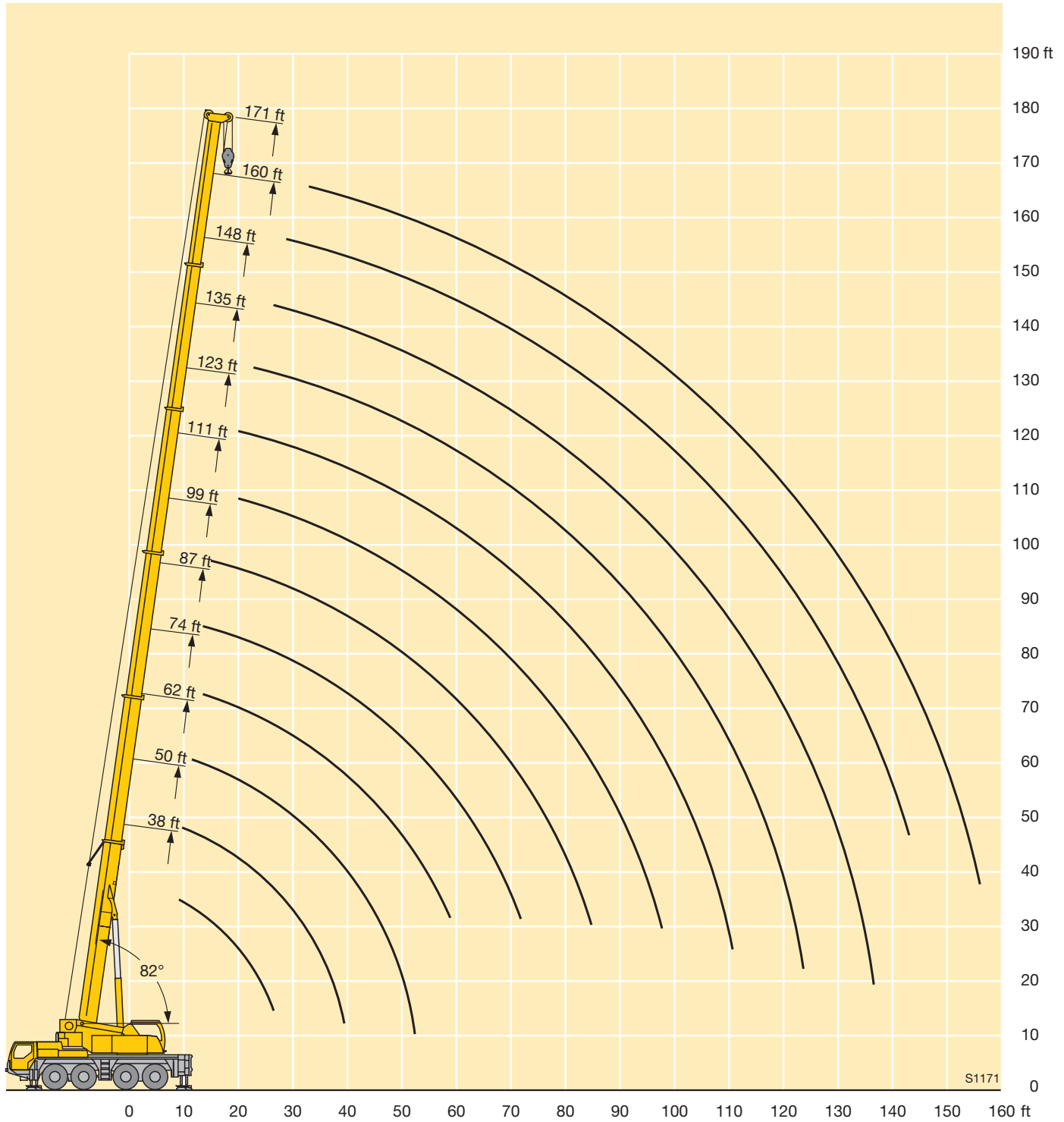
38 - 62 ft		0°		25400 lbs		85%	
ft	38 ft	50 ft	62 ft	ft			
9	51.8			9			
10	51.3			10			
11	48	48.5	49.7	11			
12	44.9	47	48.3	12			
13	42	44.2	45.4	13			
14	39.6	41.7	43	14			
15	37.2	39.4	40.6	15			
16	35.1	37.3	38.5	16			
17	33.2	35.4	36.6	17			
18	31.5	33.7	34.9	18			
20	28.1	30.3	31.6	20			
22	25	27.6	28.8	22			
24	22	24.8	26.2	24			
26	18.8	21.9	23.7	26			
28		19.4	21.2	28			
30		17.1	18.9	30			
32		15.2	16.9	32			
34		13.5	15.2	34			
36		12.1	13.8	36			
38		10.7	12.3	38			
40			11	40			
45			8.5	45			
50			6.6	50			

0° = over rear / en arrière

tyre size / dimensions de pneumatiques: 16.00 R 25 / 20.5 R 25

TAB 140179

Lifting heights Hauteurs de levage



Lifting capacities on the folding jib

Forces de levage à la fléchette pliante



ft	38 ft			123 ft			135 ft			148 ft			160 ft			171 ft			ft	
	35 ft			35 ft			35 ft			35 ft			35 ft			35 ft				
	0°	20°	40°	0°	20°	40°	0°	20°	40°	0°	20°	40°	0°	20°	40°	0°	20°	40°		
9	30.9																		9	
10	30.8																		10	
11	30.3																		11	
12	29.9																		12	
13	29.4																		13	
14	28.8																		14	
15	28.3																		15	
16	27.7	26.9																	16	
17	27.1	26.6																	17	
18	26.6	26																	18	
20	25.3	25																	20	
22	24	23.9		33															22	
24	22.7	22.9		32.7															24	
26	21.5	21.9	20.9	32.2			29.3												26	
28	20.3	21.1	20.2	31.7			29			23.3				18.9					28	
30	19.2	20.2	19.5	31.2			28.6			23.2				18.8					30	
32	18.3	19.5	18.8	30.8			28.3			22.9				18.5			15.2		32	
34	17.4	18.7	18.2	30.4			28			22.5				18.2			15		34	
36	16.7	18	17.7	29.9			27.7			22.2				17.9			14.8		36	
38	15.9	17.3	17.1	29.5	25.6		27.4	24.5		21.9				17.6			14.5		38	
40	15.1	16.5	16.6	29	25.5		27	24.4		21.6				17.3			14.2		40	
45	13.6	14.7	15.5	27.7	24.3	21	26.1	23.5		20.8	19.4			16.8	16		13.6	12.9	45	
50	12.2	13.2	14	26.4	23.2	20.3	24.9	22.7	19.7	20.1	18.8	17.9		16.2	15.4		13.1	12.5	50	
55	11.2	11.9	12.9	25	22.1	19.5	23.5	21.8	19.4	19.3	18.1	17.5		15.6	14.8	14	12.6	12	11.5	55
60				23.4	21.1	18.8	22	20.9	18.7	18.5	17.4	16.8		15	14.3	14	12.1	11.6	11.4	60
65				21.4	20.2	18.1	19.9	20.1	18.1	17.8	16.7	16.2		14.4	13.7	13.5	11.7	11.2	11	65
70				19.3	19.4	17.6	18	18.9	17.6	17.1	16.1	15.6		13.9	13.3	13.1	11.2	10.8	10.6	70
75				17.4	18.2	17	16.6	17.2	17.1	15.8	15.5	15.1		13.4	12.8	12.7	10.8	10.4	10.3	75
80				15.6	16.7	16.5	15.5	15.6	16.3	14.2	14.8	14.6		12.9	12.4	12.3	10.5	10	9.9	80
85				14.1	15.1	15.8	14	14.6	14.7	12.8	13.8	14.1		12.5	12	11.9	10.1	9.7	9.6	85
90				12.8	13.7	14.4	12.7	13.5	13.9	12.2	12.4	13.1		11.5	11.7	11.6	9.7	9.4	9.3	90
95				11.8	12.4	13	11.8	12.3	12.9	11.5	11.6	12		10.4	11.1	11.3	9.4	9.1	9	95
100				11.1	11.3	11.7	11.2	11.3	11.8	10.5	11	11.1		9.4	10.2	10.8	8.9	8.8	8.7	100
105				10.6	10.5	10.6	10.5	10.7	10.7	9.6	10.3	10.8		8.5	9.2	9.9	8.2	8.5	8.5	105
110				10.1	10.1	10.1	9.6	10	10.3	8.7	9.4	9.9		7.6	8.3	8.9	7.3	8	8.3	110
115				9.5	9.7	9.8	8.7	9.2	9.6	7.9	8.5	9		6.9	7.5	8	6.6	7.3	7.7	115
120				8.7	9.1	9.3	8	8.4	8.7	7.2	7.8	8.2		6.1	6.8	7.2	5.9	6.5	7	120
125				8	8.3	8.5	7.3	7.7	7.9	6.6	7.1	7.4		5.5	6	6.5	5.2	5.8	6.3	125
130				7.4	7.7	7.8	6.7	7	7.2	6	6.4	6.7		4.9	5.4	5.8	4.6	5.2	5.6	130
135				6.8	7	7.1	6.1	6.4	6.6	5.4	5.8	6.1		4.3	4.8	5.1	4.1	4.6	5	135
140				6.2	6.4		5.5	5.8	5.9	4.8	5.2	5.4		3.8	4.3	4.5	3.5	4	4.4	140
145							4.9	5.2		4.3	4.6	4.8		3.3	3.7	4	3.1	3.5	3.8	145
150							4.4	4.6		3.8	4.1	4.2		2.8	3.2	3.5	2.6	3	3.3	150
155							4	4.1		3.3	3.6	3.6		2.4	2.7	2.9	2.2	2.6	2.8	155
160										2.8	3.1				2.3	2.4		2.2	2.3	160
165										2.5										165
170										2.1										170

TAB 140431 / 140433 / 140435

Lifting capacities on the folding jib

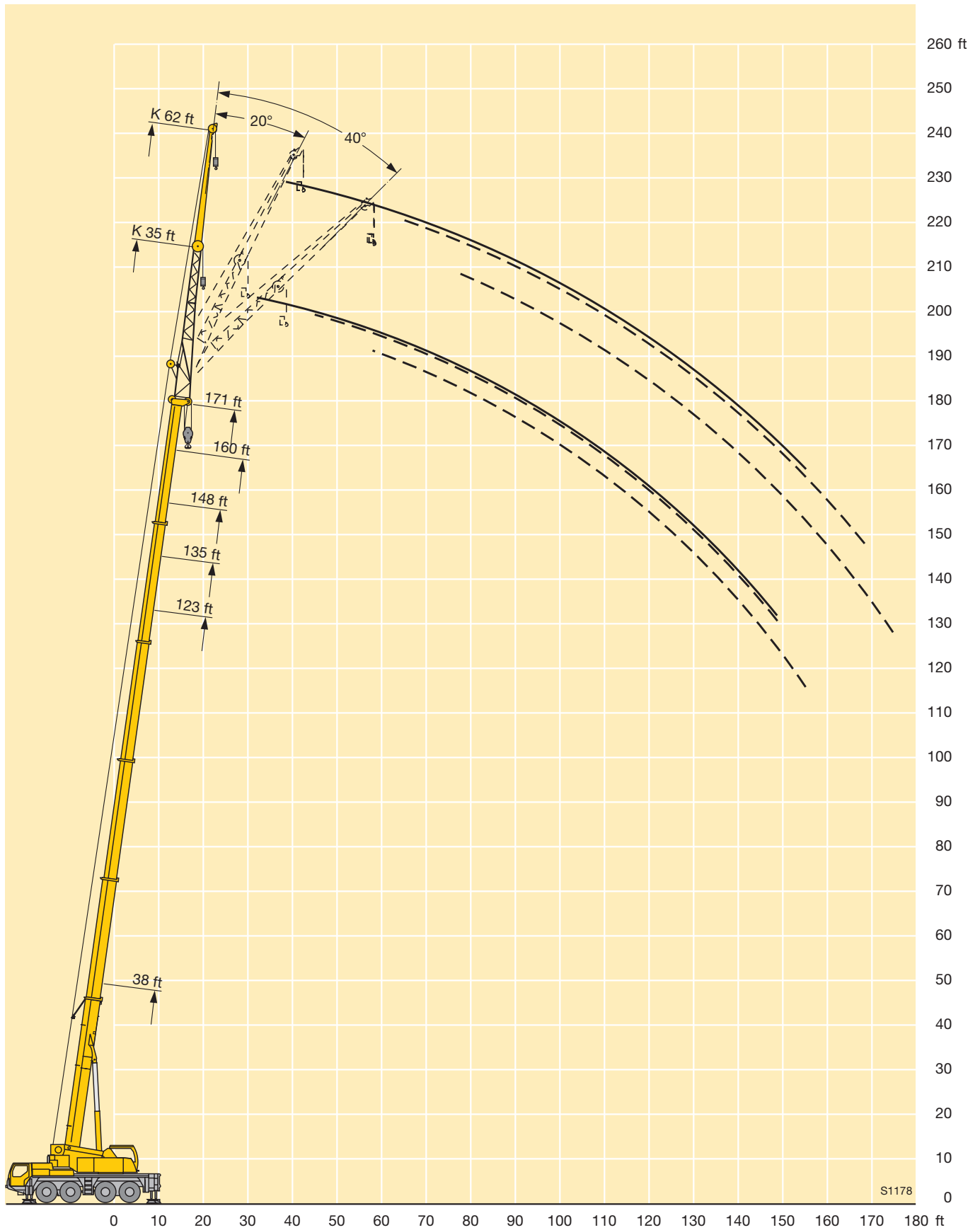
Forces de levage à la fléchette pliante



ft	38 ft			123 ft			135 ft			148 ft			160 ft			171 ft			ft
	62 ft			62 ft			62 ft			62 ft			62 ft			62 ft			
	0°	20°	40°	0°	20°	40°	0°	20°	40°	0°	20°	40°	0°	20°	40°	0°	20°	40°	
13	12.3																		13
14	12.2																		14
15	12.1																		15
16	11.9																		16
17	11.7																		17
18	11.6																		18
20	11.3																		20
22	10.9																		22
24	10.6																		24
26	10.3			12.6															26
28	10	8.6		12.5			12												28
30	9.7	8.5		12.4			12												30
32	9.5	8.3		12.3			11.9			11.1									32
34	9.2	8.1		12.2			11.8			11.1									34
36	9	7.9		12			11.7			11									36
38	8.7	7.8		11.8			11.6			10.9			9.9			8.7			38
40	8.5	7.6		11.7			11.4			10.8			9.9			8.7			40
45	8.1	7.3		11.2			11.1			10.6			9.7			8.5			45
50	7.7	7	6.3	10.8	8.3		10.7	8.2		10.3			9.5			8.3			50
55	7.4	6.7	6.2	10.4	8.1		10.3	8.1		10	7.8		9.3	7.5		8.2			55
60	7.1	6.5	6.1	10	7.9		9.9	7.9		9.6	7.7		9	7.5		8			60
65	6.8	6.4	6	9.6	7.7	6.5	9.6	7.7		9.3	7.5		8.8	7.3		7.8	7.1		65
70	6.6	6.3	6	9.3	7.5	6.4	9.3	7.5	6.4	9	7.4	6.3	8.6	7.2		7.8	7		70
75	6.5	6.2	6	9	7.3	6.3	9	7.3	6.3	8.8	7.2	6.3	8.4	7	6.1	7.7	6.9	6	75
80	6.4	6.1	6	8.6	7.2	6.2	8.7	7.2	6.2	8.5	7.1	6.2	8.2	6.9	6.1	7.5	6.7	6	80
85	6.3	6.1	6	8.4	7	6.2	8.4	7	6.1	8.3	6.9	6.1	8	6.8	6	7.3	6.6	5.9	85
90				8.1	6.9	6.1	8.2	6.9	6.1	8.1	6.8	6	7.8	6.6	5.9	7.1	6.5	5.9	90
95				7.9	6.7	6	8	6.8	6	7.9	6.7	6	7.6	6.5	5.9	6.9	6.4	5.8	95
100				7.7	6.6	6	7.8	6.7	6	7.7	6.6	6	7.5	6.5	5.9	6.7	6.3	5.8	100
105				7.5	6.5	6	7.6	6.6	6	7.5	6.5	5.9	7.3	6.4	5.8	6.5	6.2	5.8	105
110				7.4	6.4	6	7.4	6.5	6	7.4	6.4	5.9	7.2	6.3	5.8	6.3	6.1	5.8	110
115				7.2	6.4	6	7.2	6.4	5.9	7.2	6.4	5.9	7	6.3	5.8	6.2	6	5.8	115
120				7.1	6.3	6	7.1	6.3	5.9	7	6.3	5.9	6.7	6.2	5.8	6	5.8	5.8	120
125				6.9	6.3	6	7	6.3	5.9	6.8	6.2	5.9	6.1	6.1	5.8	5.8	5.7	5.7	125
130				6.7	6.3	6	6.8	6.3	5.9	6.4	6.2	5.9	5.5	6.1	5.8	5.2	5.6	5.7	130
135				6.5	6.2	6	6.5	6.2	5.9	5.9	6.1	5.9	4.9	5.8	5.8	4.6	5.4	5.6	135
140				6.4	6.2	6	6.2	6.1	5.9	5.4	6	5.9	4.4	5.3	5.7	4.1	5.1	5.4	140
145				6.3	6.1	6	5.6	6	5.9	4.9	5.6	5.8	3.9	4.8	5.4	3.6	4.5	5.2	145
150				5.8	6.1	5.9	5.1	5.7	5.9	4.4	5.1	5.6	3.5	4.3	4.8	3.2	4	4.7	150
155				5.4	5.8	5.8	4.6	5.2	5.5	4	4.6	5.1	3	3.8	4.3	2.8	3.6	4.1	155
160				4.9	5.3	5.4	4.2	4.7	5	3.6	4.2	4.5	2.6	3.3	3.8	2.4	3.1	3.6	160
165				4.5	4.8		3.8	4.2	4.4	3.1	3.7	4	2.3	2.9	3.3		2.7	3.2	165
170				4.1	4.3		3.4	3.7	3.8	2.7	3.3	3.5	1.9	2.5	2.9		2.3	2.7	170
175							3	3.3		2.4	2.8	3		2.1	2.4		1.9	2.3	175
180							2.7	2.9		2	2.4	2.5							180

TAB 140431 / 140433 / 140435

Lifting heights Hauteurs de levage



Lifting capacities on the hydraulically variable folding jib

Forces de levage à la fléchette pliante à variation hydraulique



ft	38 ft			123 ft			135 ft			148 ft			160 ft			171 ft			ft
	35 ft			35 ft			35 ft			35 ft			35 ft			35 ft			
	0°	20°	40°	0°	20°	40°	0°	20°	40°	0°	20°	40°	0°	20°	40°	0°	20°	40°	
9	30.6																		9
10	30.5																		10
11	30.1																		11
12	29.6																		12
13	29.1																		13
14	28.6																		14
15	28.1																		15
16	27.5	26.8																	16
17	27	26.4																	17
18	26.4	25.9																	18
20	25.3	24.8																	20
22	24	23.7		32.7															22
24	22.7	22.7		32.4															24
26	21.4	21.8	20.9	31.8			29.1												26
28	20.3	20.9	20.1	31.3			28.8			23.1			18.6						28
30	19.2	20	19.3	30.8			28.4			23			18.6						30
32	18.2	19.3	18.7	30.4			28			22.6			18.3			15			32
34	17.3	18.6	18.1	29.9			27.7			22.3			18			14.8			34
36	16.6	17.8	17.6	29.5			27.4			22			17.7			14.6			36
38	15.8	17.1	17	29.1	25.3		27	24.3		21.6			17.4			14.3			38
40	15.1	16.4	16.5	28.6	25.2		26.7	24.2		21.3			17.1			14			40
45	13.5	14.6	15.4	27.4	24	20.8	25.8	23.3		20.6	19.3		16.5	15.8		13.4	12.8		45
50	12.1	13.1	13.9	26.1	22.9	20.1	24.6	22.4	19.5	19.8	18.6	17.7	16	15.3		12.9	12.4		50
55	11	11.7	12.9	24.7	21.8	19.3	23.3	21.6	19.2	19	17.9	17.4	15.4	14.7	13.9	12.4	11.9	11.4	55
60				23.2	20.8	18.6	21.8	20.7	18.5	18.2	17.2	16.7	14.7	14.1	13.8	11.9	11.5	11.3	60
65				21.3	19.9	18	19.8	19.9	18	17.6	16.5	16.1	14.2	13.6	13.4	11.5	11	10.9	65
70				19.1	19.1	17.4	17.8	18.7	17.4	16.8	15.9	15.5	13.7	13.1	13	11	10.6	10.5	70
75				17.2	18	16.9	16.4	17.1	16.9	15.6	15.3	14.9	13.2	12.7	12.6	10.7	10.2	10.1	75
80				15.4	16.5	16.4	15.3	15.4	16.2	14	14.6	14.4	12.8	12.3	12.2	10.3	9.9	9.8	80
85				13.9	14.9	15.6	13.8	14.4	14.6	12.6	13.6	14	12.3	11.9	11.8	9.9	9.5	9.5	85
90				12.6	13.5	14.2	12.5	13.3	13.8	12.1	12.2	12.9	11.3	11.5	11.5	9.6	9.2	9.1	90
95				11.6	12.2	12.8	11.6	12.1	12.8	11.3	11.4	11.9	10.2	10.9	11.2	9.2	8.9	8.9	95
100				11	11.1	11.6	11	11.1	11.6	10.3	10.8	11	9.2	10	10.6	8.8	8.7	8.6	100
105				10.5	10.3	10.4	10.2	10.5	10.5	9.4	10.1	10.6	8.2	9	9.6	7.9	8.4	8.4	105
110				10	10	10	9.4	9.8	10.1	8.5	9.1	9.6	7.4	8.1	8.7	7.1	7.8	8.1	110
115				9.3	9.5	9.6	8.5	9	9.4	7.7	8.3	8.7	6.6	7.3	7.8	6.3	7	7.5	115
120				8.5	8.9	9.1	7.8	8.2	8.5	7	7.5	7.9	5.9	6.5	7	5.6	6.3	6.8	120
125				7.8	8.1	8.3	7.1	7.5	7.7	6.3	6.8	7.1	5.2	5.8	6.2	5	5.6	6	125
130				7.2	7.5	7.6	6.4	6.8	7	5.7	6.1	6.5	4.6	5.2	5.5	4.4	4.9	5.3	130
135				6.5	6.8	6.8	5.8	6.2	6.3	5.1	5.5	5.8	4.1	4.6	4.9	3.8	4.3	4.7	135
140				6	6.1		5.2	5.5	5.6	4.6	5	5.2	3.5	4	4.3	3.3	3.8	4.1	140
145							4.6	4.9		4	4.4	4.5	3.1	3.5	3.7	2.8	3.2	3.5	145
150							4.1	4.3		3.5	3.8	3.9	2.6	3	3.2	2.4	2.8	3	150
155							3.7	3.8		3	3.3	3.3	2.1	2.5	2.7		2.3	2.5	155
160										2.6	2.8				2.1				160
165										2.2									165
170										1.8									170

TAB 140507 / 140509 / 140511

Lifting capacities on the hydraulically variable folding jib

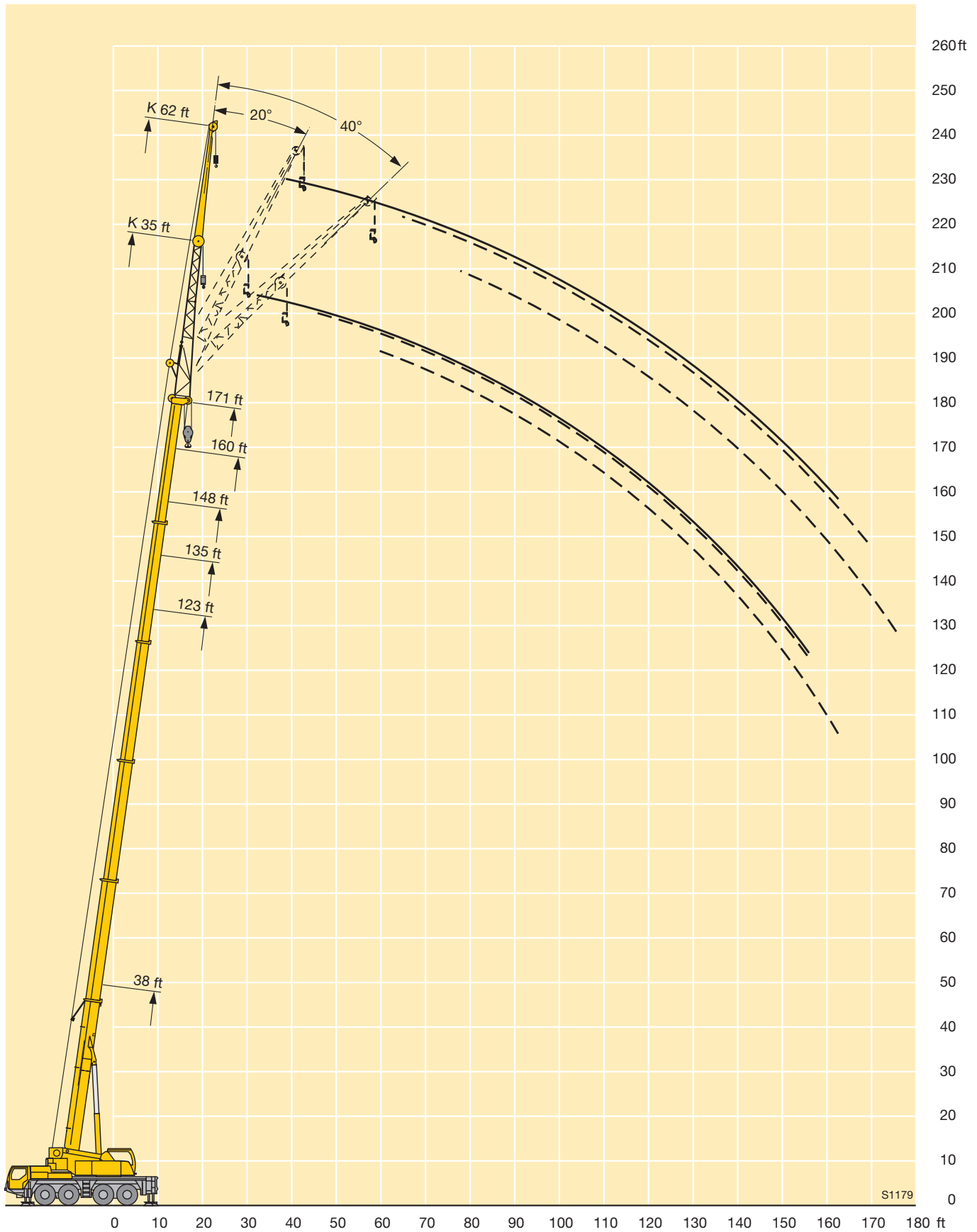
Forces de levage à la fléchette pliante à variation hydraulique



ft	38 ft			123 ft			135 ft			148 ft			160 ft			171 ft			ft
	0°	20°	40°	0°	20°	40°	0°	20°	40°	0°	20°	40°	0°	20°	40°	0°	20°	40°	
13	12.3																		13
14	12.1																		14
15	11.9																		15
16	11.8																		16
17	11.6																		17
18	11.5																		18
20	11.2																		20
22	10.8																		22
24	10.5																		24
26	10.2			12.6															26
28	9.9	7.6		12.5			12												28
30	9.6	7.6		12.4			12												30
32	9.4	7.6		12.2			11.9			11.1									32
34	9.1	7.6		12			11.7			11									34
36	8.9	7.6		11.9			11.6			10.9									36
38	8.7	7.6		11.7			11.4			10.8			9.9			8.5			38
40	8.5	7.5		11.5			11.3			10.7			9.9			8.5			40
45	8	7.2		11.1			10.9			10.4			9.6			8.5			45
50	7.6	6.9	6.2	10.6	8.2		10.5	8.1		10.1			9.4			8.3			50
55	7.3	6.7	6.2	10.2	8		10.2	8		9.8	7.7		9.2	7.4		8.2			55
60	7	6.5	6	9.8	7.8		9.8	7.8		9.5	7.6		8.9	7.4		8			60
65	6.8	6.3	6	9.5	7.6	6.4	9.4	7.6		9.2	7.5		8.7	7.2		7.8	7		65
70	6.6	6.3	6	9.1	7.4	6.4	9.1	7.4	6.3	8.9	7.3	6.2	8.4	7.1		7.8	6.9		70
75	6.4	6.2	6	8.8	7.2	6.3	8.8	7.2	6.3	8.6	7.1	6.2	8.2	6.9	6	7.6	6.8	6	75
80	6.3	6.1	6	8.5	7.1	6.2	8.6	7.1	6.2	8.4	7	6.1	8	6.8	6	7.4	6.7	5.9	80
85	6.3	6.1	6	8.3	6.9	6.1	8.3	6.9	6.1	8.2	6.8	6	7.8	6.7	6	7.2	6.6	5.9	85
90				8	6.8	6.1	8.1	6.8	6	8	6.7	6	7.7	6.6	5.9	7	6.5	5.8	90
95				7.8	6.7	6	7.9	6.7	6	7.8	6.6	6	7.5	6.5	5.9	6.8	6.4	5.8	95
100				7.6	6.6	6	7.7	6.6	6	7.6	6.5	5.9	7.4	6.4	5.8	6.6	6.3	5.8	100
105				7.4	6.5	6	7.5	6.5	5.9	7.4	6.5	5.9	7.2	6.3	5.8	6.4	6.2	5.8	105
110				7.3	6.4	6	7.3	6.4	5.9	7.3	6.4	5.9	7.1	6.3	5.8	6.2	6.1	5.8	110
115				7.1	6.3	6	7.2	6.3	5.9	7.1	6.3	5.9	6.9	6.2	5.8	6.1	5.9	5.7	115
120				7	6.3	6	7	6.3	5.9	6.9	6.2	5.9	6.6	6.1	5.8	5.9	5.8	5.7	120
125				6.8	6.3	6	6.9	6.2	5.9	6.8	6.2	5.9	6.6	6.1	5.8	5.6	5.6	5.7	125
130				6.6	6.2	6	6.7	6.2	5.9	6.3	6.1	5.9	6.3	6.1	5.8	5	5.5	5.6	130
135				6.5	6.2	6	6.4	6.2	5.9	6.1	5.9	5.9	6.1	5.7	5.8	4.5	5.3	5.5	135
140				6.4	6.1	5.9	6	6.1	5.9	5.2	5.9	5.9	4.2	5.1	5.6	3.9	4.9	5.3	140
145				6.2	6.1	5.9	5.5	6	5.9	4.7	5.5	5.8	3.7	4.6	5.2	3.5	4.4	5.1	145
150				5.7	6.1	5.9	5	5.6	5.8	4.3	4.9	5.4	3.3	4.1	4.7	3	3.9	4.5	150
155				5.2	5.6	5.6	4.5	5	5.3	3.8	4.5	4.9	2.8	3.6	4.1	2.6	3.4	4	155
160				4.7	5.1	5.1	4	4.5	4.8	3.4	4	4.3	2.4	3.1	3.6	2.2	2.9	3.5	160
165				4.3	4.6		3.6	4	4.2	2.9	3.5	3.8		2.7	3.1		2.5	3	165
170				3.9	4.1		3.2	3.5	3.6	2.5	3.1	3.3		2.3	2.6		2.1	2.5	170
175							2.8	3.1		2.2	2.6	2.8		1.9	2.2		2.1		175
180							2.4	2.7				2.2	2.3						180

TAB 140507 / 140509 / 140511

Lifting heights Hauteurs de levage



Lifting capacities on the folding jib with boom extension

Forces de levage à la fléchette pliante avec télescope rallongé



ft	38 ft + 23 ft			135 ft + 23 ft			148 ft + 23 ft			160 ft + 23 ft			171 ft + 23 ft			ft
	35 ft			35 ft			35 ft			35 ft			35 ft			
	0°	20°	40°	0°	20°	40°	0°	20°	40°	0°	20°	40°	0°	20°	40°	
13	13.6															13
14	13.4															14
15	13.1															15
16	13															16
17	12.8															17
18	12.6	12.3														18
20	12.2	12.2														20
22	11.8	11.9														22
24	11.5	11.5														24
26	11.1	11.1		14.6												26
28	10.8	10.7	10.2	14.4			13.4									28
30	10.4	10.4	10.2	14.2			13.3									30
32	10.1	10.1	10	13.9			13.2			12.2						32
34	9.8	9.8	9.7	13.7			13			12.1						34
36	9.5	9.5	9.5	13.5			12.8			11.9						36
38	9.2	9.2	9.2	13.3	12.3		12.6			11.8			9.8			38
40	8.9	8.9	8.9	13.1	12.2		12.4			11.7			9.8			40
45	8.3	8.3	8.3	12.6	11.7		12	11.2		11.3	10.7		9.4			45
50	7.8	7.8	7.8	12.1	11.2	10.2	11.6	10.9	10	11	10.4		9.1	8.6		50
55	7.3	7.3	7.3	11.7	10.8	10	11.3	10.5	9.9	10.7	10.1	9.3	8.8	8.5	8	55
60	6.9	6.9	6.9	11.2	10.4	9.7	10.9	10.1	9.5	10.3	9.8	9.2	8.5	8.2	8	60
65	6.5	6.6	6.5	10.8	10	9.3	10.5	9.8	9.2	10	9.5	8.9	8.2	7.9	7.7	65
70	6.1	6.2	6.2	10.4	9.6	9	10.1	9.5	8.9	9.7	9.2	8.7	7.9	7.6	7.4	70
75	5.7	5.8	6	10	9.3	8.7	9.8	9.2	8.6	9.4	8.9	8.4	7.6	7.4	7.2	75
80	5.4	5.5		9.6	8.9	8.5	9.5	8.9	8.4	9.1	8.6	8.2	7.3	7.1	6.9	80
85	4.9	5.1		9.2	8.6	8.2	9.2	8.6	8.1	8.8	8.4	8	7.1	6.8	6.7	85
90				8.9	8.4	7.9	8.9	8.3	7.9	8.6	8.1	7.8	6.9	6.6	6.5	90
95				8.6	8.1	7.7	8.5	8.1	7.7	8.3	7.9	7.6	6.6	6.4	6.2	95
100				8.3	7.9	7.5	8.3	7.9	7.5	8.1	7.7	7.4	6.4	6.2	6	100
105				8	7.6	7.3	8	7.7	7.3	7.9	7.5	7.2	6.2	6	5.8	105
110				7.8	7.4	7.1	7.8	7.4	7.1	7.4	7.3	7	6	5.8	5.7	110
115				7.5	7.2	6.9	7.5	7.2	7	6.7	7.1	6.9	5.9	5.6	5.5	115
120				7.3	7	6.8	7	7	6.8	6	6.6	6.7	5.5	5.5	5.4	120
125				7	6.9	6.7	6.3	6.9	6.6	5.3	5.9	6.4	5	5.3	5.2	125
130				6.5	6.7	6.5	5.7	6.2	6.5	4.7	5.3	5.7	4.4	5	5.1	130
135				5.9	6.3	6.4	5.1	5.6	6	4.1	4.7	5.1	3.9	4.4	4.8	135
140				5.4	5.8	6	4.6	5.1	5.4	3.6	4.1	4.5	3.3	3.9	4.3	140
145				4.9	5.2		4.1	4.5	4.8	3.1	3.6	3.9	2.9	3.4	3.7	145
150				4.3	4.7		3.7	4	4.3	2.7	3.1	3.4	2.4	2.9	3.2	150
155				3.8	4.2		3.2	3.6	3.8	2.3	2.7	2.9		2.4	2.7	155
160				3.4	3.7		2.8	3.1			2.2	2.5			2.3	160
165				3	3.2		2.3	2.7								165
170				2.6	2.8		1.9	2.2								170
175				2.2	2.4											175

TAB 140287 / 140289 / 140291

Lifting capacities on the folding jib with boom extension

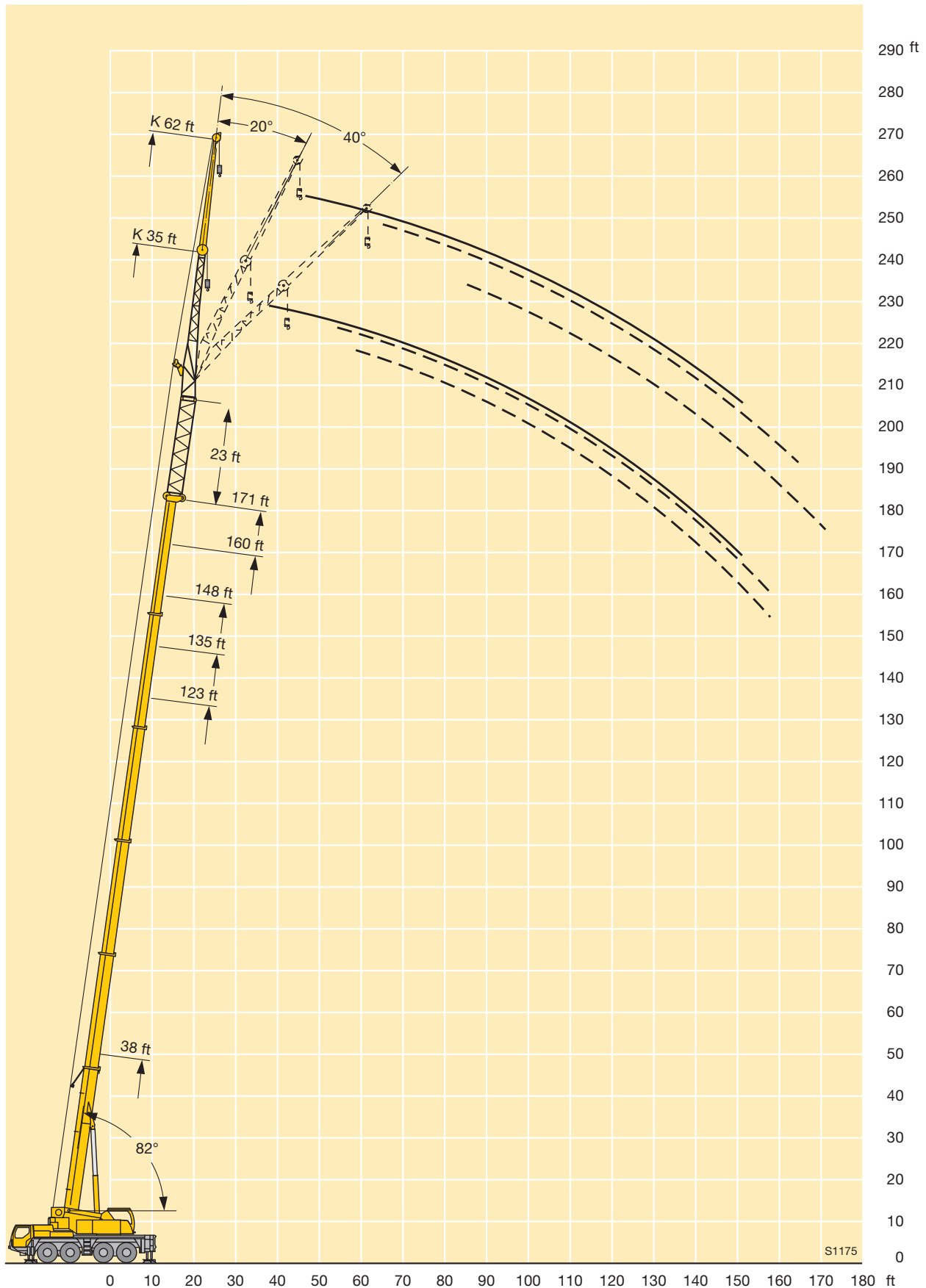
Forces de levage à la fléchette pliante avec télescope rallongé



ft	38 ft + 23 ft			135 ft + 23 ft			148 ft + 23 ft			160 ft + 23 ft			171 ft + 23 ft			ft
	62 ft			62 ft			62 ft			62 ft			62 ft			
	0°	20°	40°	0°	20°	40°	0°	20°	40°	0°	20°	40°	0°	20°	40°	
18	9															18
20	9															20
22	8.9															22
24	8.7															24
26	8.6															26
28	8.4			9.3												28
30	8.2			9.3												30
32	8	7.6		9.3			8.8									32
34	7.9	7.6		9.2			8.8									34
36	7.7	7.5		9.2			8.8									36
38	7.5	7.5		9.2			8.7			8.3						38
40	7.3	7.4		9.1			8.7			8.2						40
45	6.9	7		9			8.6			8.1			6.9			45
50	6.5	6.6	6.4	8.8			8.4			7.9			6.7			50
55	6.1	6.2	6.3	8.5	7.6		8.2	7.5		7.8			6.5			55
60	5.8	5.9	6	8.3	7.6		8	7.5		7.6			6.3			60
65	5.5	5.6	5.7	8	7.4		7.8	7.3		7.4	7		6.1	5.9		65
70	5.2	5.3	5.4	7.8	7.2	6.4	7.6	7.1		7.3	6.8		5.9	5.8		70
75	5	5	5.1	7.5	7	6.4	7.3	6.8	6.3	7	6.6	6	5.7	5.6		75
80	4.8	4.8	4.9	7.3	6.7	6.3	7.1	6.6	6.3	6.8	6.4	6	5.6	5.4		80
85	4.6	4.6	4.7	7.1	6.5	6.2	6.9	6.4	6.1	6.7	6.3	6	5.4	5.3	5.2	85
90	4.4	4.4	4.5	6.8	6.3	6	6.7	6.2	6	6.5	6.1	5.8	5.2	5.1	5	90
95	4.2	4.2	4.3	6.6	6.1	5.9	6.5	6	5.8	6.3	5.9	5.7	5	5	4.9	95
100	4	4.1	4.2	6.4	5.9	5.7	6.3	5.9	5.7	6.1	5.8	5.5	4.9	4.8	4.8	100
105	3.8	3.9		6.2	5.8	5.6	6.1	5.7	5.5	6	5.6	5.4	4.7	4.7	4.6	105
110	3.7	3.7		6	5.6	5.4	6	5.6	5.4	5.8	5.5	5.3	4.6	4.5	4.5	110
115				5.8	5.4	5.3	5.8	5.4	5.2	5.7	5.3	5.2	4.5	4.4	4.4	115
120				5.7	5.3	5.1	5.7	5.3	5.1	5.6	5.2	5.1	4.3	4.3	4.3	120
125				5.5	5.2	5	5.5	5.2	5	5.4	5.1	4.9	4.2	4.1	4.2	125
130				5.3	5	4.9	5.4	5.1	4.9	4.9	5	4.9	4.1	4	4.1	130
135				5.2	4.9	4.8	5.2	4.9	4.8	4.4	4.9	4.8	3.9	3.9	4	135
140				5	4.8	4.7	4.9	4.8	4.7	3.9	4.7	4.7	3.6	3.8	3.9	140
145				4.9	4.7	4.6	4.4	4.7	4.6	3.4	4.4	4.6	3.1	3.7	3.8	145
150				4.6	4.6	4.5	3.9	4.6	4.5	3	3.9	4.5	2.7	3.6	3.6	150
155				4.2	4.5	4.5	3.5	4.2	4.5	2.6	3.4	4	2.3	3.1	3.6	155
160				3.8	4.3	4.4	3.1	3.8	4.2	2.2	3	3.5		2.7	3.3	160
165				3.5	4	4.3	2.7	3.4	3.8		2.5	3.1		2.3	2.9	165
170				3.1	3.6	3.9	2.4	3	3.4		2.1	2.6		1.9	2.4	170
175				2.7	3.2		2	2.6	3			2.2			2	175
180				2.3	2.8			2.2	2.6							180
185					2.4											185
190					2											190

TAB 140287 / 140289 / 140291

Lifting heights Hauteurs de levage



Lifting capacities on the folding jib with boom extension

Forces de levage à la fléchette pliante avec télescope rallongé



ft	38 ft + 46 ft			135 ft + 46 ft			148 ft + 46 ft			160 ft + 46 ft			171 ft + 46 ft			ft
	35 ft			35 ft			35 ft			35 ft			35 ft			
	0°	20°	40°	0°	20°	40°	0°	20°	40°	0°	20°	40°	0°	20°	40°	
16	9.9															16
17	9.8															17
18	9.7															18
20	9.4															20
22	9.2	8.9														22
24	8.9	8.8														24
26	8.7	8.8														26
28	8.5	8.5														28
30	8.2	8.3														30
32	8	8	7.7	10.1												32
34	7.8	7.8	7.6	10.1												34
36	7.6	7.6	7.5	9.9												36
38	7.3	7.4	7.4	9.8			9.3			7.8						38
40	7.1	7.2	7.3	9.7			9.2			7.8						40
45	6.6	6.7	6.8	9.3	8.9		8.9			7.8			6.3			45
50	6.2	6.2	6.3	9	8.6		8.6	8.1		7.8	7.7		6.2			50
55	5.8	5.8	5.9	8.7	8.2	7.7	8.3	8	7.4	7.7	7.6		6.1	6.1		55
60	5.5	5.5	5.5	8.4	7.9	7.6	8.1	7.7	7.4	7.6	7.3		6	6.1		60
65	5.1	5.1	5.2	8	7.6	7.3	7.8	7.4	7.1	7.4	7.1	6.8	5.9	5.9	5.8	65
70	4.8	4.8	4.9	7.7	7.3	7	7.5	7.1	6.9	7.2	6.8	6.6	5.7	5.6	5.6	70
75	4.6	4.6	4.6	7.4	7	6.8	7.2	6.9	6.6	6.9	6.6	6.4	5.5	5.4	5.4	75
80	4.3	4.3	4.4	7.1	6.8	6.5	7	6.6	6.4	6.7	6.4	6.2	5.3	5.2	5.2	80
85	4.1	4.1	4.1	6.8	6.5	6.3	6.7	6.4	6.2	6.5	6.2	6	5.1	5.1	5	85
90	3.9	3.9	3.9	6.6	6.2	6.1	6.5	6.2	6	6.3	6	5.8	4.9	4.9	4.9	90
95	3.7	3.7	3.7	6.3	6	5.9	6.3	6	5.8	6.1	5.8	5.7	4.7	4.7	4.7	95
100	3.5	3.5	3.5	6.1	5.8	5.7	6.1	5.8	5.6	5.9	5.6	5.5	4.6	4.5	4.5	100
105				5.9	5.6	5.5	5.9	5.6	5.4	5.7	5.4	5.3	4.4	4.3	4.3	105
110				5.7	5.4	5.3	5.7	5.4	5.2	5.6	5.3	5.1	4.3	4.2	4.2	110
115				5.5	5.2	5.1	5.5	5.2	5.1	5.4	5.2	5	4.1	4	4.1	115
120				5.3	5.1	5	5.3	5.1	5	5.2	5	4.9	4	3.9	3.9	120
125				5.1	4.9	4.8	5.2	4.9	4.8	4.8	4.9	4.8	3.9	3.8	3.8	125
130				5	4.8	4.7	5	4.8	4.7	4.2	4.7	4.6	3.7	3.7	3.7	130
135				4.8	4.6	4.6	4.6	4.7	4.6	3.7	4.3	4.5	3.3	3.6	3.6	135
140				4.6	4.5	4.5	4.1	4.5	4.5	3.1	3.7	4.1	2.8	3.3	3.4	140
145				4.4	4.4	4.3	3.6	4.1	4.3	2.7	3.2	3.6		2.9	3.3	145
150				3.9	4.2	4.2	3.2	3.6	3.9	2.2	2.7	3.1		2.5	2.8	150
155				3.5	3.8	4	2.7	3.2	3.4		2.3	2.6			2.4	155
160				3.1	3.4		2.3	2.7	3			2.1				160
165				2.7	3			2.3								165
170				2.3	2.6			1.9								170
175				1.9	2.2											175

TAB 140293 / 140295 / 140297

Lifting capacities on the folding jib with boom extension

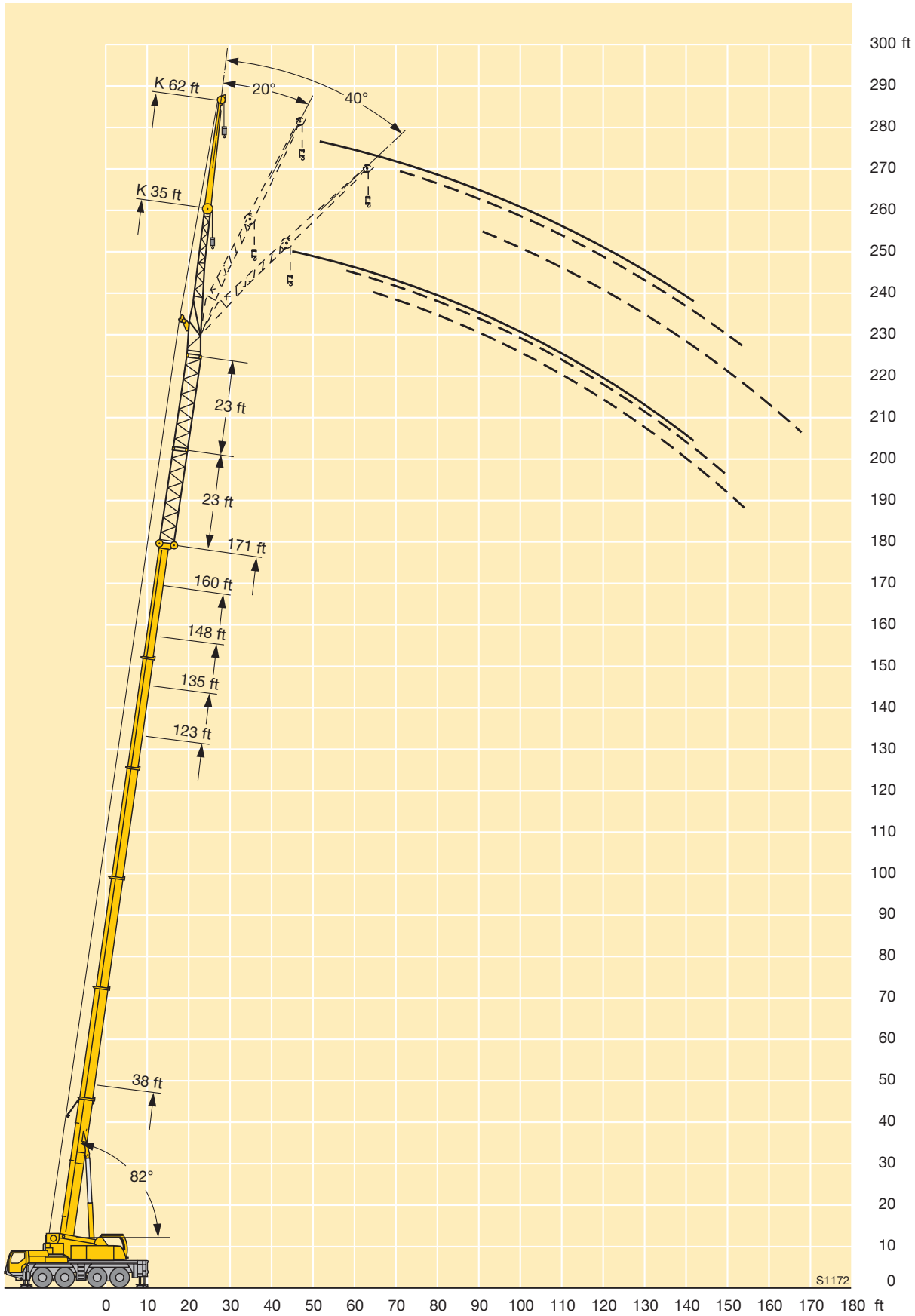
Forces de levage à la fléchette pliante avec télescope rallongé



ft	38 ft + 46 ft			135 ft + 46 ft			148 ft + 46 ft			160 ft + 46 ft			171 ft + 46 ft			ft
	62 ft			62 ft			62 ft			62 ft			62 ft			
	0°	20°	40°	0°	20°	40°	0°	20°	40°	0°	20°	40°	0°	20°	40°	
22	6.9															22
24	6.8															24
26	6.7															26
28	6.5															28
30	6.4															30
32	6.3															32
34	6.2															34
36	6															36
38	5.9	6.1		7.1			6.7									38
40	5.8	6		7.1			6.7									40
45	5.4	5.7		6.9			6.5			5.3						45
50	5.1	5.3		6.7			6.3			5.3			4.5			50
55	4.8	5	5.1	6.5			6.2			5.2			4.3			55
60	4.5	4.7	5	6.3			6			5.1			4.1			60
65	4.2	4.4	4.7	6.1	5.8		5.8	5.6		5.1			4.1			65
70	4	4.2	4.4	5.9	5.6		5.7	5.5		5.1	4.9		4.1	4.2		70
75	3.8	4	4.1	5.7	5.4	5.2	5.5	5.3		5.1	4.9		4.1	4.1		75
80	3.6	3.7	3.9	5.5	5.2	5.1	5.3	5.1		5	4.9		4	4		80
85	3.4	3.5	3.7	5.2	5.1	5	5.1	4.9	4.8	4.9	4.7		3.9	3.8		85
90	3.2	3.3	3.5	5.1	4.9	4.8	5	4.8	4.7	4.7	4.6	4.5	3.7	3.7	3.7	90
95	3.1	3.2	3.3	4.9	4.7	4.6	4.8	4.6	4.5	4.6	4.5	4.4	3.6	3.6	3.6	95
100	2.9	3	3.1	4.7	4.5	4.5	4.7	4.5	4.4	4.4	4.3	4.3	3.5	3.5	3.5	100
105	2.8	2.9	3	4.5	4.4	4.3	4.5	4.3	4.3	4.3	4.2	4.1	3.3	3.4	3.4	105
110	2.6	2.7	2.8	4.4	4.2	4.2	4.4	4.2	4.1	4.2	4.1	4	3.2	3.3	3.3	110
115	2.5	2.6	2.7	4.2	4.1	4	4.2	4	4	4	3.9	3.9	3.1	3.2	3.2	115
120	2.4	2.4	2.6	4.1	4	3.9	4.1	3.9	3.9	3.9	3.8	3.8	3	3.1	3.1	120
125	2.3	2.3		3.9	3.8	3.8	3.9	3.8	3.8	3.8	3.7	3.7	2.9	3	3	125
130	2.2	2.3		3.8	3.7	3.7	3.8	3.7	3.7	3.7	3.6	3.6	2.8	2.9	2.9	130
135				3.7	3.6	3.6	3.7	3.6	3.6	3.6	3.5	3.5	2.7	2.8	2.8	135
140				3.6	3.5	3.5	3.6	3.5	3.5	3.4	3.4	3.4	2.6	2.7	2.8	140
145				3.5	3.4	3.4	3.5	3.4	3.4	2.9	3.3	3.3	2.5	2.6	2.7	145
150				3.4	3.3	3.3	3.3	3.3	3.3	2.4	3.2	3.2	2.1	2.5	2.6	150
155				3.3	3.2	3.2	2.9	3.2	3.2		2.9	3.2		2.4	2.5	155
160				3.1	3.1	3.1	2.5	3.1	3.1		2.5	3		2.2	2.4	160
165				2.9	3	3	2.2	2.9	3			2.7			2.3	165
170				2.5	2.9	2.9	1.8	2.5	2.9			2.3			2	170
175				2.2	2.7	2.9		2.1	2.6			1.9				175
180					2.4	2.7			2.2							180
185					2.1											185
190					1.8											190

TAB 140293 / 140295 / 140297

Lifting heights Hauteurs de levage



Lifting capacities on the hydraulically variable folding jib with boom extension

Forces de levage à la flèche pliante à variation hydraulique avec télescope rallongé



ft	38 ft + 23 ft			135 ft + 23 ft			148 ft + 23 ft			160 ft + 23 ft			171 ft + 23 ft			ft
	35 ft			35 ft			35 ft			35 ft			35 ft			
	0°	20°	40°	0°	20°	40°	0°	20°	40°	0°	20°	40°	0°	20°	40°	
13	13.5															13
14	13.3															14
15	13.1															15
16	12.9															16
17	12.7															17
18	12.5	12.1														18
20	12.1	12														20
22	11.7	11.7														22
24	11.4	11.4														24
26	11	11		14.4												26
28	10.6	10.6	10.1	14.2			13.2									28
30	10.3	10.3	10.1	14			13.2									30
32	10	10	9.9	13.8			13			12						32
34	9.7	9.7	9.6	13.5			12.8			12						34
36	9.4	9.4	9.3	13.3			12.6			11.8						36
38	9.1	9.1	9.1	13.1	12.1		12.4			11.7			9.7			38
40	8.8	8.8	8.8	12.9	12		12.3			11.5			9.7			40
45	8.2	8.2	8.1	12.4	11.5		11.9	11.1		11.1	10.5		9.3			45
50	7.6	7.7	7.6	12	11.1	10.1	11.5	10.7	9.9	10.8	10.3		8.9	8.5		50
55	7.1	7.2	7.2	11.5	10.6	9.9	11.1	10.4	9.7	10.5	10	9.2	8.6	8.3	7.9	55
60	6.7	6.8	6.8	11.1	10.2	9.6	10.7	10	9.4	10.2	9.6	9.1	8.3	8	7.9	60
65	6.3	6.4	6.4	10.6	9.8	9.2	10.3	9.7	9.1	9.8	9.3	8.8	8	7.8	7.6	65
70	5.9	6	6.1	10.2	9.4	8.9	10	9.3	8.8	9.5	9	8.6	7.7	7.5	7.3	70
75	5.6	5.6	5.7	9.8	9.1	8.6	9.6	9	8.5	9.2	8.8	8.3	7.4	7.2	7.1	75
80	5.2	5.3		9.4	8.8	8.3	9.3	8.7	8.3	9	8.5	8.1	7.2	7	6.8	80
85	4.7	5		9.1	8.5	8	9	8.4	8	8.7	8.2	7.8	6.9	6.7	6.6	85
90				8.7	8.2	7.8	8.7	8.2	7.8	8.4	8	7.6	6.7	6.4	6.3	90
95				8.4	8	7.6	8.4	7.9	7.6	8.2	7.8	7.4	6.5	6.2	6.1	95
100				8.1	7.7	7.4	8.1	7.7	7.4	7.9	7.6	7.2	6.2	6	5.9	100
105				7.8	7.5	7.2	7.9	7.5	7.2	7.7	7.4	7.1	6	5.8	5.7	105
110				7.6	7.3	7	7.6	7.3	7	7.1	7.2	6.9	5.9	5.6	5.6	110
115				7.3	7.1	6.8	7.3	7.1	6.8	6.4	6.9	6.8	5.7	5.5	5.4	115
120				7.1	6.9	6.7	6.7	6.9	6.7	5.7	6.4	6.6	5.3	5.3	5.3	120
125				6.8	6.7	6.5	6	6.6	6.5	5	5.7	6.2	4.8	5.2	5.1	125
130				6.2	6.5	6.4	5.4	6	6.2	4.4	5	5.5	4.2	4.7	5	130
135				5.6	6.1	6.2	4.9	5.4	5.7	3.9	4.4	4.8	3.6	4.2	4.6	135
140				5.1	5.5	5.8	4.3	4.8	5.1	3.4	3.9	4.2	3.1	3.6	4	140
145				4.6	5		3.8	4.3	4.5	2.9	3.4	3.7	2.6	3.1	3.5	145
150				4	4.4		3.4	3.8	4	2.4	2.9	3.1	2.1	2.6	2.9	150
155				3.6	3.9		2.9	3.3	3.5		2.4	2.6		2.2	2.5	155
160				3.1	3.4		2.5	2.9				2.2				160
165				2.7	2.9			2.4								165
170				2.3	2.5			1.9								170
175				1.9	2.1											175

TAB 140636 / 140638 / 140640

Lifting capacities on the hydraulically variable folding jib with boom extension

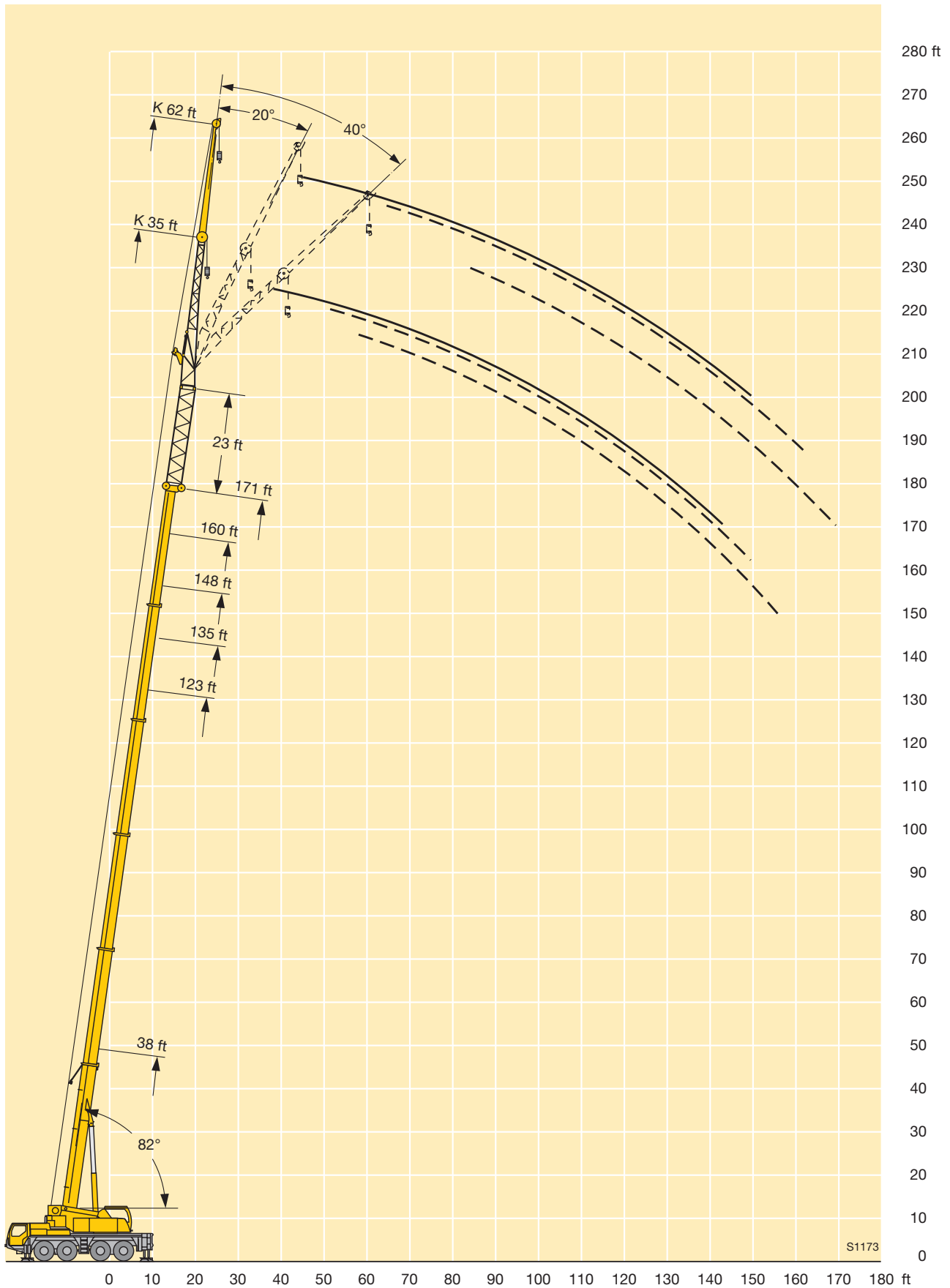
Forces de levage à la fléchette pliante à variation hydraulique avec télescope rallongé



ft	38 ft + 23 ft			135 ft + 23 ft			148 ft + 23 ft			160 ft + 23 ft			171 ft + 23 ft			ft
	62 ft			62 ft			62 ft			62 ft			62 ft			
	0°	20°	40°	0°	20°	40°	0°	20°	40°	0°	20°	40°	0°	20°	40°	
18	9															18
20	9															20
22	8.9															22
24	8.7															24
26	8.5															26
28	8.4			9.3												28
30	8.2			9.3												30
32	8	7.5		9.2			8.8									32
34	7.8	7.5		9.2			8.7									34
36	7.6	7.4		9.2			8.7									36
38	7.4	7.4		9.2			8.7			8.2						38
40	7.2	7.3		9.1			8.7			8.2						40
45	6.8	6.9		8.9			8.5			8.1			6.8			45
50	6.4	6.5	6.3	8.7			8.3			7.9			6.6			50
55	6.1	6.1	6.2	8.4	7.5		8.1	7.4		7.7			6.4			55
60	5.7	5.8	6	8.2	7.5		7.9	7.4		7.5			6.2			60
65	5.4	5.5	5.6	7.9	7.3		7.7	7.2		7.3	6.9		6	5.8		65
70	5.1	5.2	5.4	7.6	7.1	6.3	7.4	7		7.1	6.7		5.8	5.7		70
75	4.9	5	5.1	7.4	6.8	6.3	7.2	6.7	6.3	6.9	6.5	5.9	5.7	5.5		75
80	4.7	4.7	4.8	7.2	6.6	6.3	7	6.5	6.2	6.7	6.3	5.9	5.5	5.3		80
85	4.5	4.5	4.6	6.9	6.4	6.1	6.8	6.3	6.1	6.5	6.1	5.9	5.3	5.2	5.1	85
90	4.3	4.3	4.4	6.7	6.2	5.9	6.6	6.1	5.9	6.4	6	5.7	5.1	5	4.9	90
95	4	4.1	4.3	6.5	6	5.8	6.4	6	5.7	6.2	5.8	5.6	4.9	4.8	4.8	95
100	3.9	4	4.1	6.2	5.8	5.6	6.2	5.8	5.6	6	5.7	5.5	4.8	4.7	4.7	100
105	3.7	3.8		6	5.6	5.5	6	5.6	5.4	5.9	5.5	5.3	4.6	4.5	4.6	105
110	3.5	3.6		5.9	5.5	5.3	5.8	5.5	5.3	5.7	5.4	5.2	4.5	4.4	4.4	110
115				5.7	5.3	5.2	5.7	5.3	5.2	5.6	5.2	5.1	4.3	4.3	4.3	115
120				5.5	5.2	5.1	5.5	5.2	5	5.4	5.1	5	4.2	4.1	4.2	120
125				5.4	5.1	4.9	5.4	5.1	4.9	5.3	5	4.9	4.1	4	4.1	125
130				5.2	4.9	4.8	5.2	4.9	4.8	4.8	4.9	4.8	4	3.9	4	130
135				5.1	4.8	4.7	5	4.8	4.7	4.2	4.8	4.7	3.8	3.8	3.9	135
140				4.9	4.7	4.6	4.7	4.7	4.6	3.7	4.6	4.6	3.4	3.7	3.8	140
145				4.8	4.6	4.5	4.2	4.6	4.5	3.2	4.2	4.5	2.9	3.6	3.7	145
150				4.4	4.5	4.4	3.7	4.5	4.5	2.8	3.7	4.3	2.5	3.4	3.6	150
155				4	4.4	4.4	3.3	4.1	4.4	2.4	3.2	3.9	2.1	3	3.4	155
160				3.6	4.2	4.3	2.9	3.6	4.1		2.8	3.4		2.5	3.1	160
165				3.2	3.8	4.2	2.5	3.2	3.6		2.3	2.9			2.7	165
170				2.8	3.4	3.7	2.2	2.8	3.2		1.9	2.4			2.2	170
175				2.5	3		1.8	2.4	2.7			2				175
180				2.1	2.6			2	2.3							180
185					2.2											185
190					1.8											190

TAB 140636 / 140638 / 140640

Lifting heights Hauteurs de levage



Lifting capacities on the hydraulically variable folding jib with boom extension

Forces de levage à la fléchette pliante à variation hydraulique avec télescope rallongé



ft	38 ft + 46 ft			135 ft + 46 ft			148 ft + 46 ft			160 ft + 46 ft			171 ft + 46 ft			ft
	35 ft			35 ft			35 ft			35 ft			35 ft			
	0°	20°	40°	0°	20°	40°	0°	20°	40°	0°	20°	40°	0°	20°	40°	
16	9.7															16
17	9.6															17
18	9.5															18
20	9.2															20
22	9	8.7														22
24	8.8	8.7														24
26	8.5	8.7														26
28	8.3	8.4														28
30	8.1	8.2														30
32	7.8	7.9	7.5	10												32
34	7.6	7.7	7.5	9.9												34
36	7.4	7.5	7.4	9.8												36
38	7.2	7.2	7.3	9.6			9.2			7.5						38
40	7	7	7.2	9.5			9.1			7.5						40
45	6.5	6.5	6.6	9.1	8.7		8.8			7.5			6.1			45
50	6	6.1	6.2	8.8	8.4		8.5	8		7.5	7.5		5.9			50
55	5.7	5.7	5.8	8.5	8.1	7.5	8.2	7.8	7.3	7.5	7.4		5.8	6		55
60	5.3	5.3	5.4	8.2	7.8	7.5	7.9	7.5	7.3	7.4	7.2		5.8	5.9		60
65	5	5	5	7.8	7.4	7.2	7.6	7.2	7	7.2	6.9	6.7	5.8	5.7	5.6	65
70	4.7	4.7	4.7	7.5	7.1	6.9	7.3	7	6.7	7	6.7	6.5	5.6	5.5	5.5	70
75	4.4	4.5	4.5	7.2	6.9	6.6	7	6.7	6.5	6.8	6.5	6.3	5.4	5.3	5.3	75
80	4.2	4.2	4.2	6.9	6.6	6.4	6.8	6.5	6.3	6.5	6.3	6.1	5.1	5.1	5.1	80
85	4	4	4	6.7	6.3	6.1	6.5	6.2	6.1	6.3	6	5.9	4.9	4.9	4.9	85
90	3.7	3.7	3.8	6.4	6.1	5.9	6.3	6	5.8	6.1	5.8	5.7	4.7	4.7	4.7	90
95	3.5	3.5	3.5	6.2	5.9	5.7	6.1	5.8	5.6	5.9	5.6	5.5	4.6	4.5	4.5	95
100	3.3	3.4	3.3	6	5.7	5.5	5.9	5.6	5.5	5.7	5.5	5.3	4.4	4.4	4.4	100
105				5.7	5.5	5.3	5.7	5.4	5.3	5.6	5.3	5.2	4.3	4.2	4.2	105
110				5.5	5.3	5.1	5.5	5.2	5.1	5.4	5.1	5.1	4.1	4	4.1	110
115				5.3	5.1	5	5.3	5.1	5	5.2	5	4.9	4	3.9	3.9	115
120				5.1	5	4.8	5.2	5	4.8	5	4.8	4.8	3.8	3.8	3.8	120
125				5	4.8	4.7	5	4.8	4.7	4.5	4.7	4.6	3.7	3.6	3.7	125
130				4.8	4.6	4.6	4.8	4.6	4.6	3.9	4.5	4.5	3.5	3.5	3.5	130
135				4.7	4.5	4.4	4.3	4.5	4.5	3.4	4	4.3	3.1	3.4	3.4	135
140				4.4	4.4	4.3	3.8	4.3	4.3	2.9	3.4	3.9	2.6	3.1	3.3	140
145				4.1	4.2	4.2	3.3	3.8	4.1		2.9	3.3		2.7	3.1	145
150				3.6	4	4.1	2.9	3.3	3.6		2.5	2.8		2.2	2.6	150
155				3.2	3.6	3.8	2.4	2.9	3.1			2.3			2.1	155
160				2.8	3.1			2.4	2.7							160
165				2.4	2.7											165
170				2	2.3											170
175					1.9											175

TAB 140642 / 140644 / 140646

Lifting capacities on the hydraulically variable folding jib with boom extension

Forces de levage à la fléchette pliante à variation hydraulique avec télescope rallongé



ft	38 ft + 46 ft			135 ft + 46 ft			148 ft + 46 ft			160 ft + 46 ft			171 ft + 46 ft			ft
	62 ft			62 ft			62 ft			62 ft			62 ft			
	0°	20°	40°	0°	20°	40°	0°	20°	40°	0°	20°	40°	0°	20°	40°	
22	6.8															22
24	6.7															24
26	6.6															26
28	6.4															28
30	6.3															30
32	6.2															32
34	6															34
36	5.9															36
38	5.8	5.7		7			6.6									38
40	5.6	5.7		7			6.6									40
45	5.3	5.6		6.8			6.4			5.1						45
50	5	5.3		6.6			6.2			5.1			4.1			50
55	4.7	4.9	5.1	6.3			6			5			4			55
60	4.4	4.6	4.9	6.1			5.9			4.9			3.9			60
65	4.2	4.4	4.6	5.9	5.7		5.7	5.5		4.9			3.9			65
70	3.9	4.1	4.3	5.7	5.6		5.5	5.4		4.9	4.8		3.9	4.1		70
75	3.7	3.9	4.1	5.5	5.3	5.1	5.4	5.2		4.9	4.8		3.9	4		75
80	3.5	3.6	3.8	5.3	5.1	5.1	5.2	5		4.8	4.8		3.9	3.9		80
85	3.3	3.4	3.6	5.1	5	4.9	5	4.8	4.8	4.8	4.6		3.8	3.7		85
90	3.1	3.2	3.4	4.9	4.8	4.7	4.8	4.7	4.6	4.6	4.5	4.4	3.6	3.6	3.6	90
95	3	3.1	3.2	4.8	4.6	4.5	4.7	4.5	4.4	4.5	4.3	4.3	3.5	3.5	3.5	95
100	2.8	2.9	3	4.6	4.4	4.4	4.5	4.3	4.3	4.3	4.2	4.2	3.3	3.4	3.4	100
105	2.7	2.8	2.9	4.4	4.3	4.2	4.3	4.2	4.1	4.2	4.1	4	3.2	3.2	3.3	105
110	2.5	2.6	2.7	4.3	4.1	4.1	4.2	4.1	4	4.1	3.9	3.9	3.1	3.2	3.2	110
115	2.4	2.4	2.6	4.1	4	3.9	4.1	3.9	3.9	3.9	3.8	3.8	3	3.1	3.1	115
120	2.3	2.3	2.4	4	3.9	3.8	3.9	3.8	3.8	3.8	3.7	3.7	2.8	2.9	3	120
125	2.2	2.2		3.9	3.7	3.7	3.8	3.7	3.7	3.7	3.6	3.6	2.7	2.8	2.9	125
130	2.1	2.1		3.7	3.6	3.6	3.7	3.6	3.6	3.6	3.5	3.5	2.6	2.7	2.8	130
135				3.6	3.5	3.5	3.6	3.5	3.5	3.5	3.4	3.4	2.6	2.7	2.8	135
140				3.5	3.4	3.4	3.5	3.4	3.4	3.2	3.3	3.3	2.5	2.6	2.7	140
145				3.4	3.3	3.3	3.3	3.3	3.3	2.7	3.2	3.2		2.4	2.6	145
150				3.2	3.2	3.2	3.1	3.2	3.2	2.2	3.1	3.1		2.4	2.5	150
155				3.1	3.1	3.1	2.7	3.1	3.1		2.7	3.1		2.3	2.4	155
160				2.9	3	3	2.3	2.9	3		2.3	2.9			2.3	160
165				2.6	2.9	2.9		2.7	2.9			2.5			2.1	165
170				2.3	2.8	2.8		2.3	2.8			2.1			1.8	170
175				2	2.5	2.8		1.9	2.4							175
180					2.2	2.5			2							180

TAB 140642 / 140644 / 140646

